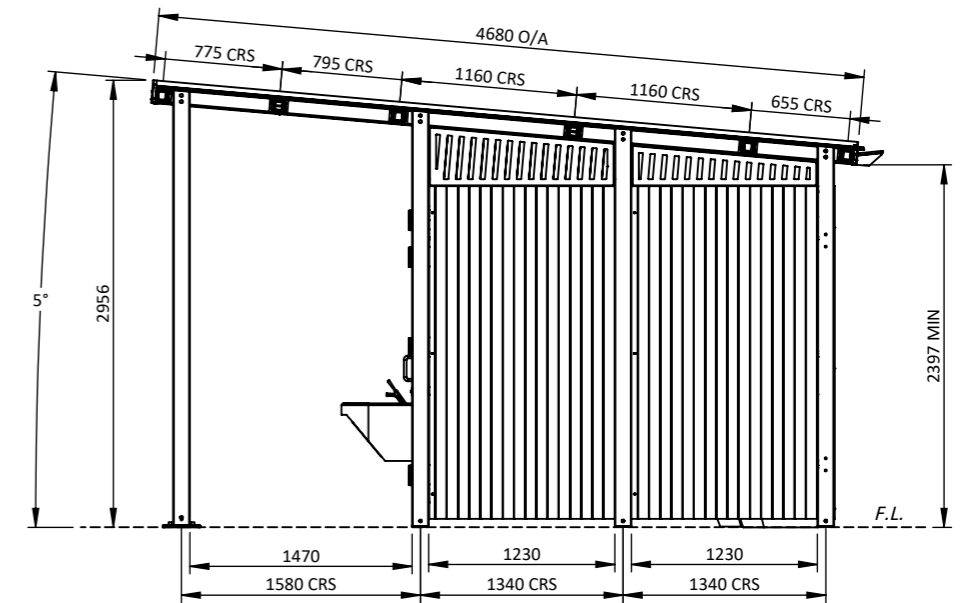
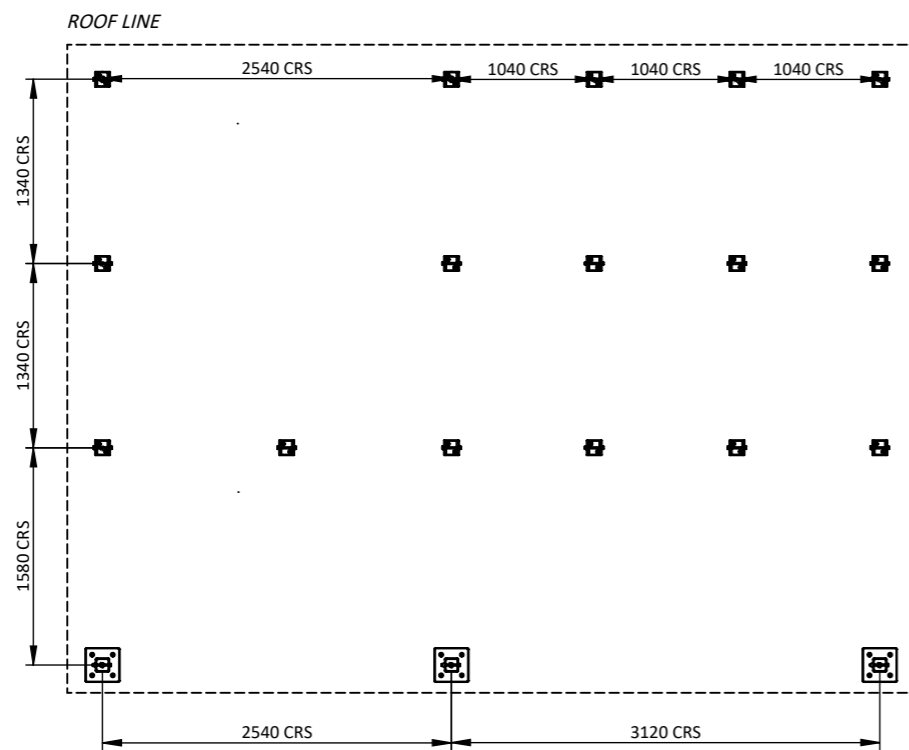


FRONT VIEW 1:50



SIDE VIEW 1:50



FOUNDATION VIEW 1:55



PICTORIAL VIEW

GOSSI
PARK & STREET FURNITURE

1082 Kingsford Smith Drive
EAGLE FARM - QLD 4009
Phone: (07) 3877 2856
Fax: (07) 3877 2890
www.gossi.com.au Email:
sales@gossi.com.au

©Copyright - This drawing is the property of G.James Glass & Aluminium Pty Ltd it must not be copied or shown to third parties without written consent

PROJECT	AMT 103		
TITLE	GENERAL ARRANGEMENT		
DATE	1/12/2022	SCALE	A3
DRAWING NUMBER	AMT-103-SLS-1		

GENERAL MATERIALS:

- Posts, framing and roofing components in extruded aluminium.
- Roof sheeting in corrugated profile coated steel.

FINISHES

- Posts, framing and brackets in Class AA25 Anodising finishes, Polyester Powder Coating or wood look aluminium.
Note: Colour may vary between alloys.
- Spigots in Polyester Powder Coating finishes.
Note: 60 Micron minimum on visible faces.

HARDWARE

- Stainless steel anti-vandal fixings.
- Roof screws colour matched roof sheets.

BUILDING COMPLIES WITH AS 1428.1 - 2009 DISABILITY ACCESS STANDARDS

UNISEX PWD WATER CLOSET COMPLIES WITH AS 1428.1 - 2009 STANDARDS

UNISEX AMB WATER CLOSET COMPLIES WITH AS 1428.1 - 2009 STANDARDS

LEGEND:

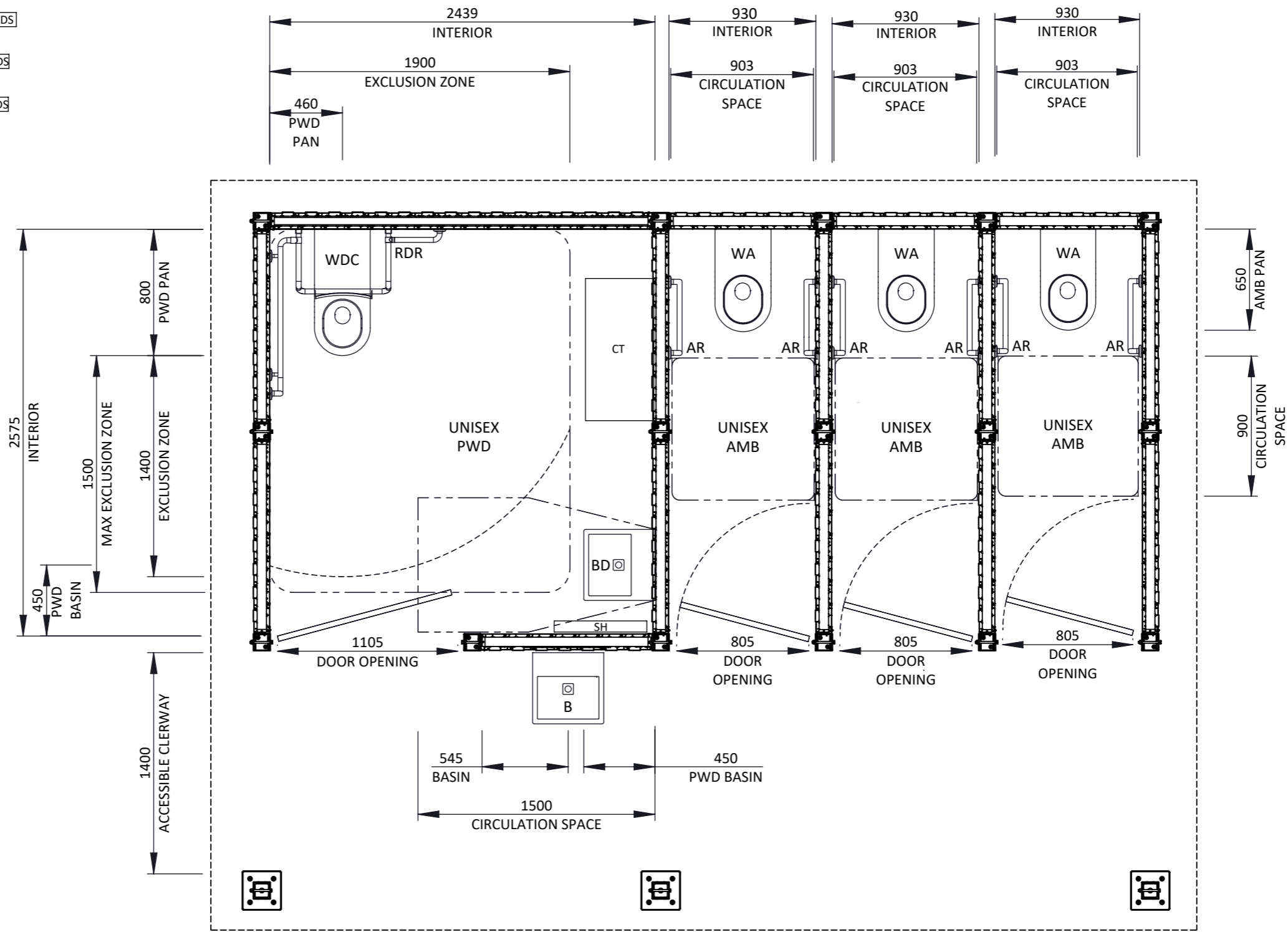
WD = Disability compliant toilet pan
 WA = Ambulant compliant toilet pan
 WDC = Disability compliant toilet pan (with cistern)
 RC = In-wall remote cistern
 BD = Disability compliant handwashing basin
 B = Handwashing basin
 LDR = LH disability compliant hand rail
 RDR = RH disability compliant hand rail
 AR = Ambulant compliant hand rail
 CT = Changing table
 SH = Shelf

UNISEX PWD = Unisex disability compliant water closet

UNISEX AMB = Unisex ambulant compliant water closet

EXCLUSION ZONES = - - - - -

CIRCULATION SPACES = - - - - -



COMPLIANCE DETAILS
1:40

GOSSI
PARK & STREET FURNITURE

1082 Kingsford Smith Drive
 EAGLE FARM - QLD 4009
 Phone: (07) 3877 2856
 Fax: (07) 3877 2890
 www.gossi.com.au Email:
 sales@gossi.com.au

©Copyright - This drawing is the property of G. James Glass & Aluminium Pty Ltd it must not be copied or shown to third parties without written consent

PROJECT	AMT 103		
TITLE	COMPLIANCE DETAILS		
DATE	1/12/2022	SCALE	1:40
DRAWING NUMBER	AMT-103-SLS-2		
			A3

GENERAL MATERIALS:

- Posts, framing and roofing components in extruded aluminium.
- Roof sheeting in corrugated profile coated steel.

FINISHES

- Posts, framing and brackets in Class AA25 Anodising finishes, Polyester Powder Coating or wood look aluminium.
Note: Colour may vary between alloys.
- Spigots in Polyester Powder Coating finishes.
Note: 60 Micron minimum on visible faces.

HARDWARE

- Stainless steel anti-vandal fixings.
- Roof screws colour matched roof sheets.