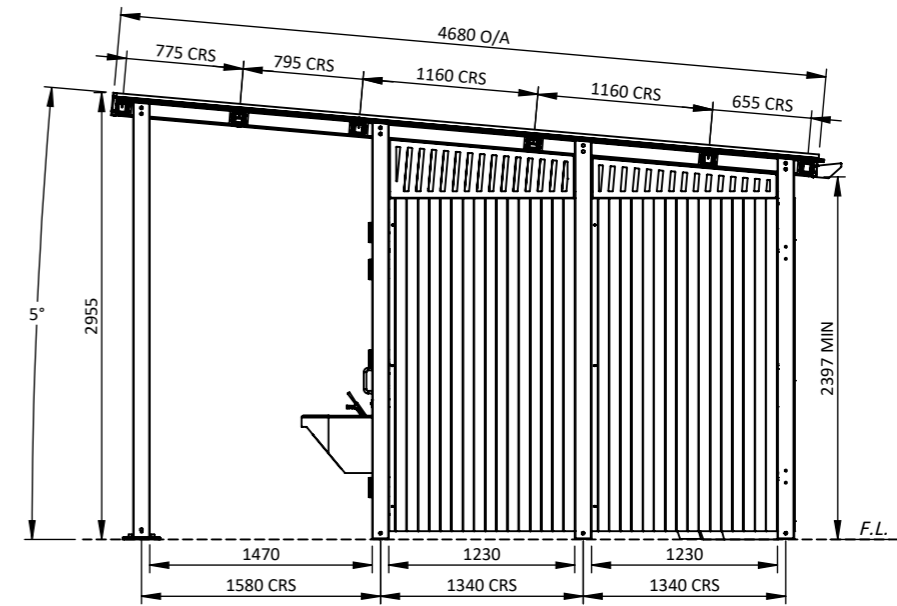
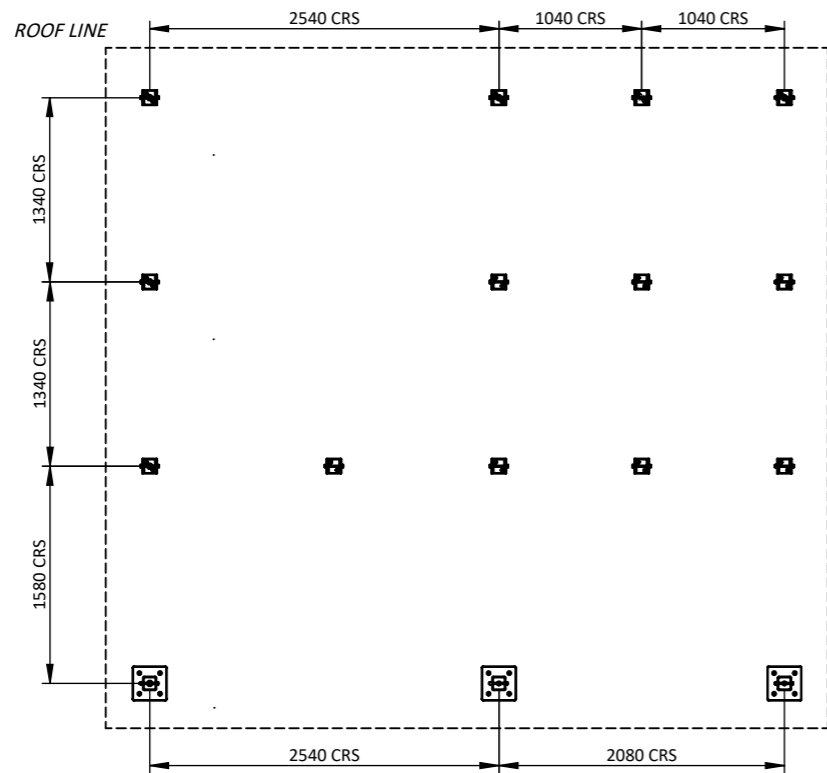


FRONT VIEW
1:50



SIDE VIEW
1:50



FOUNDATION VIEW
1:55



PICTORIAL VIEW

GOSSI
PARK & STREET FURNITURE

1082 Kingsford Smith Drive
EAGLE FARM - QLD 4009
Phone: (07) 3877 2856
Fax: (07) 3877 2890
www.gossi.com.au Email:
sales@gossi.com.au

©Copyright - This drawing
is the property of G.James
Glass & Aluminium Pty Ltd
it must not be copied or
shown to third parties
without written consent

PROJECT	AMT 102		
TITLE	GENERAL ARRANGEMENT		
DATE	1/12/2022	SCALE	A3
DRAWING NUMBER	AMT-102-SLS-1		

GENERAL MATERIALS:

- Posts, framing and roofing components in extruded aluminium.
- Roof sheeting in corrugated profile coated steel.

FINISHES

- Posts, framing and brackets in Class AA25 Anodising finishes, Polyester Powder Coating or wood look aluminium.
Note: Colour may vary between alloys.
- Spigots in Polyester Powder Coating finishes.
Note: 60 Micron minimum on visible faces.

HARDWARE

- Stainless steel anti-vandal fixings.
- Roof screws colour matched roof sheets.

BUILDING COMPLIES WITH AS 1428.1 - 2009 DISABILITY ACCESS STANDARDS

UNISEX PWD WATER CLOSET COMPLIES WITH AS 1428.1 - 2009 STANDARDS

UNISEX AMB WATER CLOSET COMPLIES WITH AS 1428.1 - 2009 STANDARDS

LEGEND:

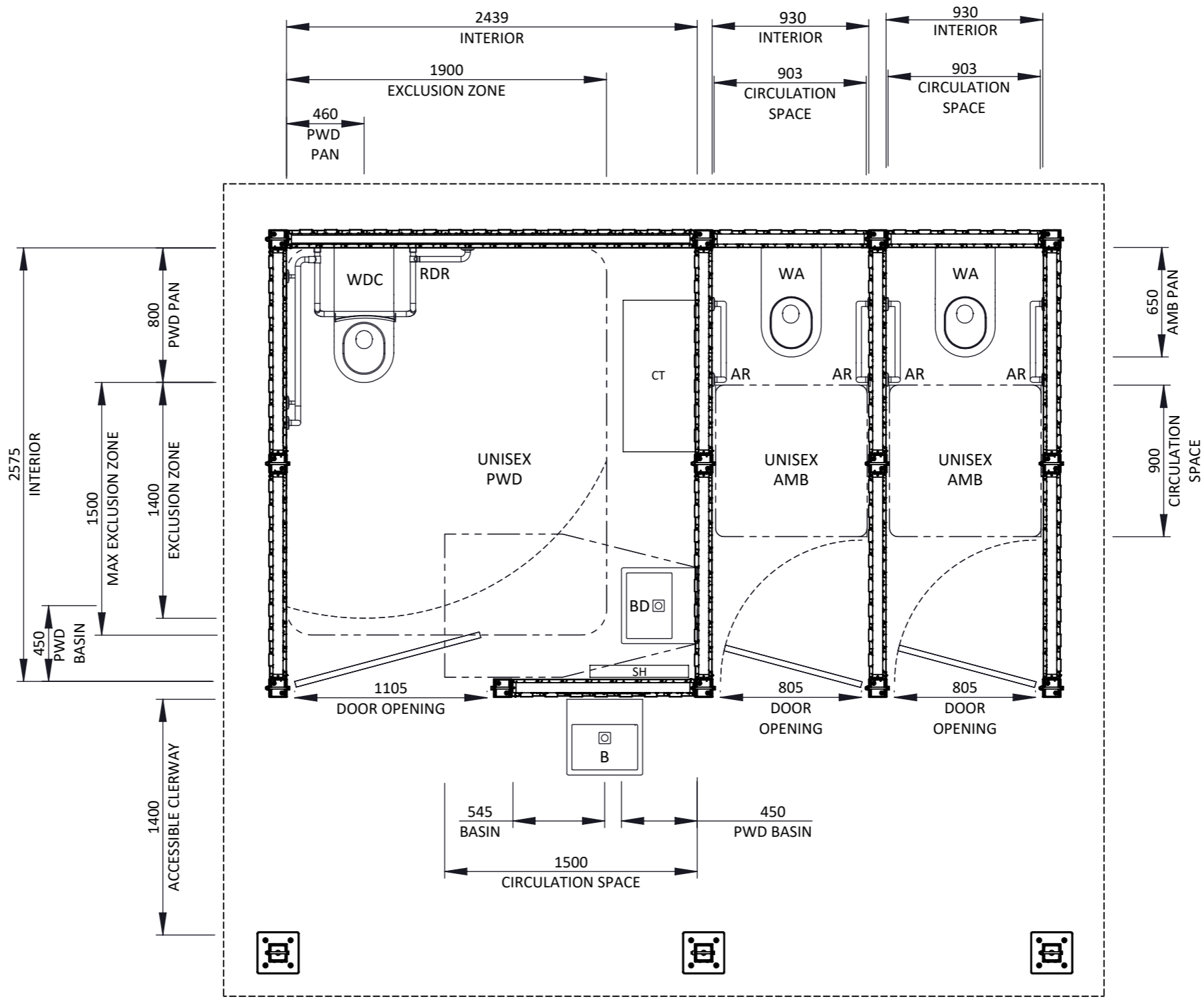
- WD = Disability compliant toilet pan
- WA = Ambulant compliant toilet pan
- WDC = Disability compliant toilet pan (with cistern)
- RC = In-wall remote cistern
- BD = Disability compliant handwashing basin
- B = Handwashing basin
- LDR = LH disability compliant hand rail
- RDR = RH disability compliant hand rail
- AR = Ambulant compliant hand rail
- CT = Changing table
- SH = Shelf

UNISEX PWD = Unisex disability compliant water closet

UNISEX AMB = Unisex ambulant compliant water closet

EXCLUSION ZONES = - - - - -

CIRCULATION SPACES = - - - - -



COMPLIANCE DETAILS
NTS



1082 Kingsford Smith Drive
EAGLE FARM - QLD 4009
Phone: (07) 3877 2856
Fax: (07) 3877 2890
www.gossi.com.au Email:
sales@gossi.com.au

©Copyright - This drawing is the property of G. James Glass & Aluminium Pty Ltd it must not be copied or shown to third parties without written consent

PROJECT	AMT 102		
TITLE	COMPLIANCE DETAILS		
DATE	1/12/2022	SCALE	NTS
DRAWING NUMBER	AMT-102-SLS-2		

- GENERAL MATERIALS:**
- Posts, framing and roofing components in extruded aluminium.
 - Roof sheeting in corrugated profile coated steel.

- FINISHES**
- Posts, framing and brackets in Class AA25 Anodising finishes, Polyester Powder Coating or wood look aluminium.
Note: Colour may vary between alloys.
 - Spigots in Polyester Powder Coating finishes.
Note: 60 Micron minimum on visible faces.

- HARDWARE**
- Stainless steel anti-vandal fixings.
 - Roof screws colour matched roof sheets.

Z:\gossi\Gossi New 2022\Amenities\Standard Products\AMT-102\Design\